

**Fork Truck Attachments**

# INSTRUCTION GUIDE

## POLY LID INSTALLATION D- AND H-STYLE SELF-DUMPING HOPPERS

### Contents

Warnings and Safety Instructions .....	1
Replacement Parts and Receiving .....	1
Required Tools and Time .....	1

H-Style Hopper lid bracket installation .....	2
D-Style Hopper lid bracket installation .....	3
Installing the hopper lid .....	4-5

### WARNINGS & SAFETY INSTRUCTIONS

- *Ensure that all employees understand and follow the following instructions.*
- *Failure to read and understand these instructions before installing the lid constitutes a misuse of the product. All persons involved in performing this task must be familiar with this material.*
- ALL contents must be removed from the hopper before any work is performed on the hopper.
- Ensure that all information/safety/warning labels stay in place and remain legible.
- Maintenance and repairs are to be done only by personnel qualified to perform the required work. Consideration will not be given for warranty repair charges without prior written authorization from the manufacturer.

### REPLACEMENT PARTS

We take pride in using quality parts on the equipment we manufacture. We are not responsible for equipment problems resulting from the use of unapproved replacement parts.

To order replacement or spare parts for this equipment, contact the factory.

In any communication with the factory please be prepared to provide the hopper's serial number, which is indicated on the hopper's dataplate.

### RECEIVING INSTRUCTIONS

It is possible that this replacement part could incur damage during transit.

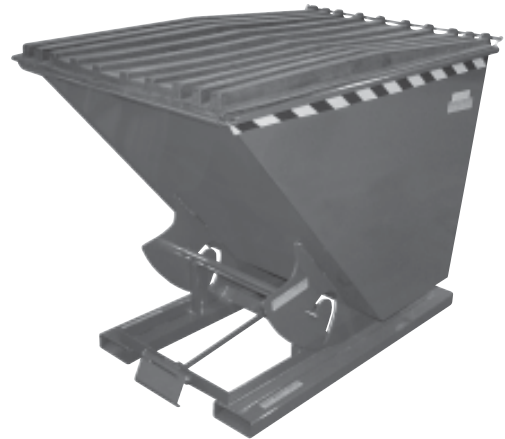
Inspect the parts and packaging closely when it arrives. *If you see evidence of damage or rough handling to either the packaging or to the part when it is being received, immediately make a note of it on the packing slip!*

It is important that you remove the part's packaging upon its arrival to ensure that there is no concealed damage or to enable a timely claim with the carrier for freight damage.

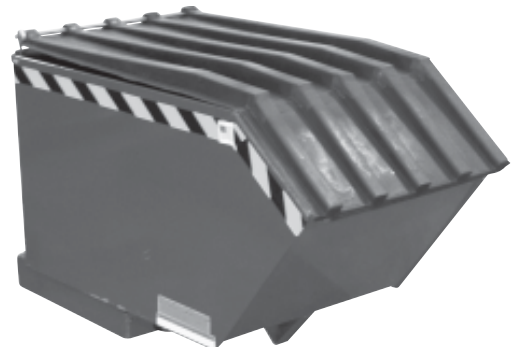
Also verify that the part and its specifications are as ordered.

### REQUIRED TOOLS AND TIME FOR REPLACEMENT

- *Pliers (to install "R" clips)*
- *Tin snips*
- *Time Required: approximately 10-15 minutes.*



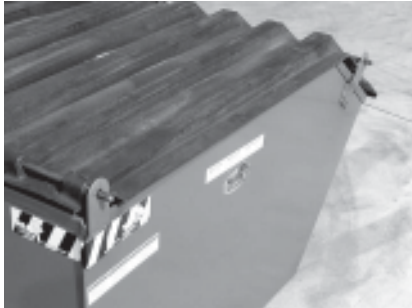
**D-STYLE HOPPER WITH  
POLY LID INSTALLED**



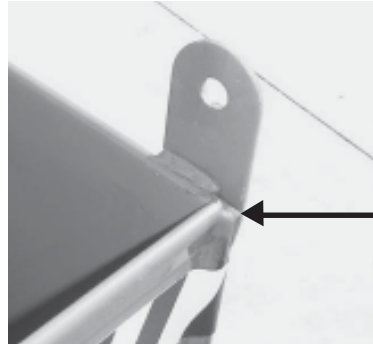
**H-STYLE HOPPER WITH  
POLY LID INSTALLED**

## H-STYLE HOPPER LID BRACKET INSTALLATION

**NOTE:** Retrofit lid brackets can be welded or bolted on. If bolting on, holes will need to be drilled in the hopper chute. The holes in the brackets can be used as a template.

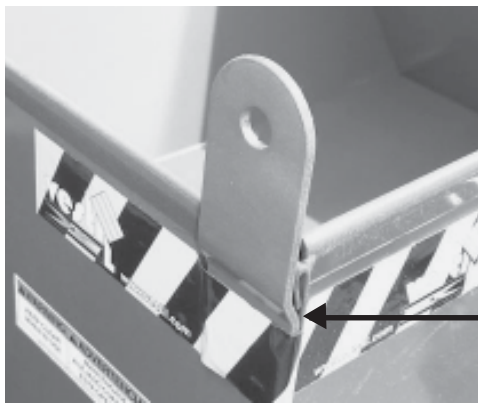


H-Style Hopper shown with lid fully installed.



Bracket should be flush with back of unit.

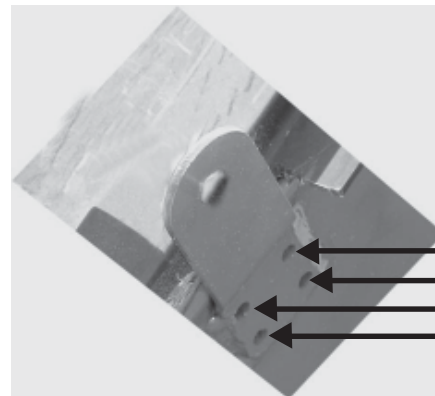
Rear hinge bracket.



Bend in bracket and folded lip alignment.

Rear hinge bracket.

**NOTE:** If retrofitting a lid, line the bracket up with the back of the chute. Then align the bend in the bracket with the folded lip.



Optional bolt holes.

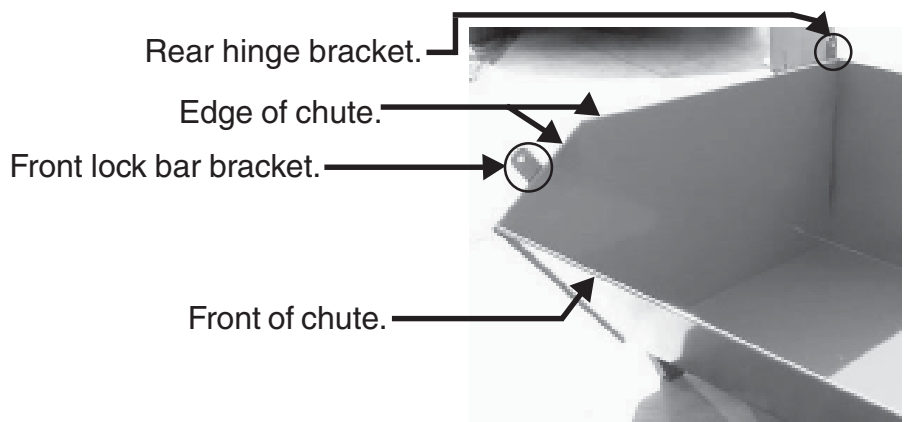
Front lock bar bracket.

**NOTE:** Front lock bar bracket only needs to be installed if you are going to use the lock bar and lock lid to prevent unauthorized use of the hopper.

Front lock bar should be 6" from the front of the chute.

Align the bend in the bracket with the folded lip (same as above).

**\*Caution:** All holes in bracket should measure the same height from the edge of the chute.

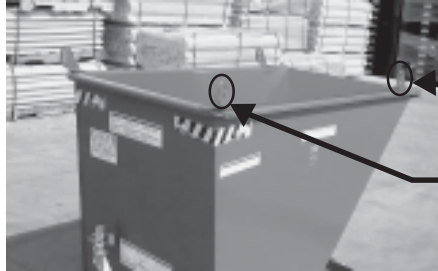


## D-STYLE HOPPER LID BRACKET INSTALLATION

**NOTE:** Retrofit lid brackets can be welded or bolted on. If bolting on, holes will need to be drilled in the hopper chute. The holes in the brackets can be used as a template.

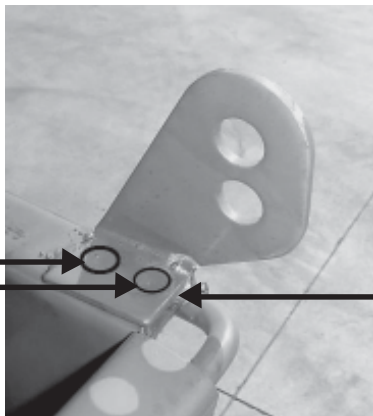


D-Style hopper shown with lid and lock bar installed.



Front lock bar brackets.

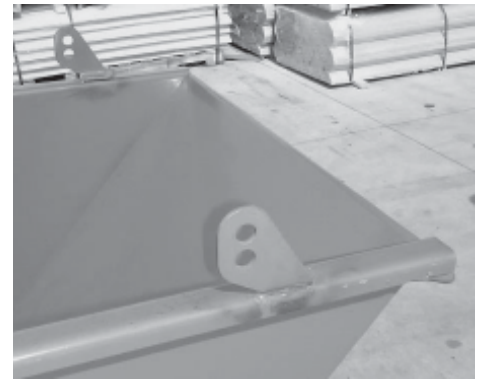
Rear hinge brackets.



Optional bolt holes.

Line up bracket with back of chute lip. Weld bracket into place.

Rear hinge bracket.  
(Bottom hole for hinge pin.)



Front lock bar bracket.  
(Top hole for lock bar.)

**NOTE:** Front lock bar bracket only needs to be installed if you are going to be using the lock bar and locking the lid to prevent unauthorized use of the hopper.



6"

Install front lock bar bracket 6" from front of chute and center on chute lip.

## INSTALLING THE HOPPER LID

### HOPPER LIDS - D STYLE

	Hopper Lid Part Number	Hopper Lid Part Number	No. of Lid Pieces	Width of each piece	Individual Lid Part No.	Part No. Complete Lid 'Kit'
D-33	PLID-D-33	PLID-D-33-R	1	23 1/4"	37-024-087-002	37-424-001
D-55	PLID-D-50	PLID-D-50-R	1	33 1/4"	37-024-087-001	37-424-002
D-75	PLID-D-75	PLID-D-75-R	1	31 1/4"	37-024-085-002	37-424-003
D-100	PLID-D-100	PLID-D-100-R	1	41 1/4"	37-024-086-001	37-424-004
D-150	PLID-D-150	PLID-D-150-R	1	13 1/2"	37-024-085-004	37-424-005
D-200	PLID-D-200	PLID-D-200-R	2	28 1/4"	37-024-085-003	37-424-006
D-250	PLID-D-250	PLID-D-250-R	2	34 3/4"	37-024-085-002	37-424-007
D-300	PLID-D-300	PLID-D-300-R	2	41 1/2"	37-024-085-001	37-424-008

### HOPPER LIDS - H STYLE

H-25	PLID-H-25	PLID-H-25-R	1	26"	37-024-088-001	37-424-009
H-50	PLID-H-50	PLID-H-50-R	1	26"	37-024-088-002	37-424-010
H-100	PLID-H-100	PLID-H-100-R	2	26"	37-024-008-002	37-424-011
H-150	PLID-H-150	PLID-H-150-R	2	26"	37-024-008-002	37-424-011

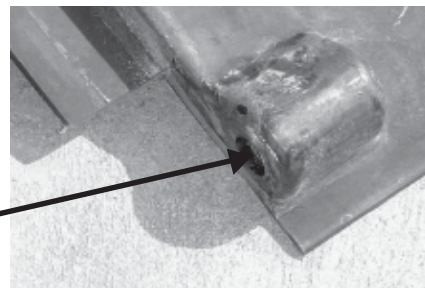
\* LIDS ORDERED WITH HOPPER SHIP FULLY INSTALLED.

\*\*RETROFIT LIDS SHIP WITH LID(S), 2 HINGE BARS, 2 'R' CLIPS AND MOUNTING BRACKETS.

\*\*\* Both hinge pin and lock bar are the same size and style pin bar.

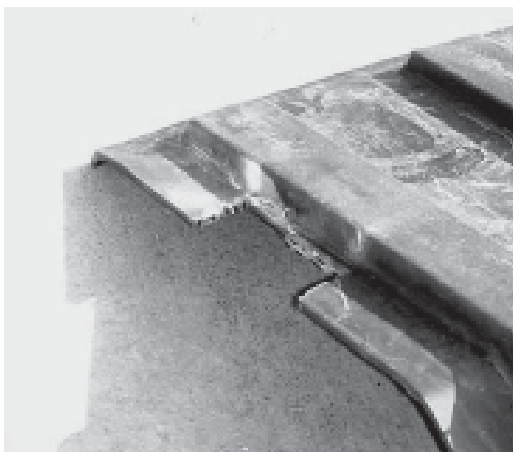


Hopper Lid.



Hinge pin  
boss.

In hoppers with a two-piece lid design, there will be a right and left lid.



If you are installing the lock bar bracket, the hopper lid will need to be cut out (by the installer) to go around the brackets.



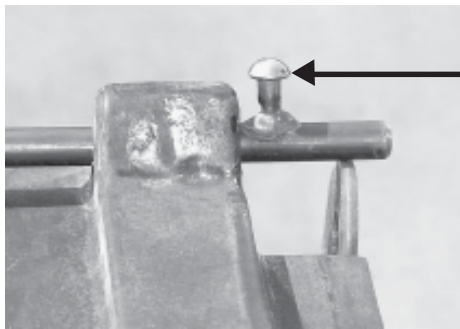
Insert pin through all lid hinge bosses.

---

**INSTALLING THE HOPPER LID, cont'd.**



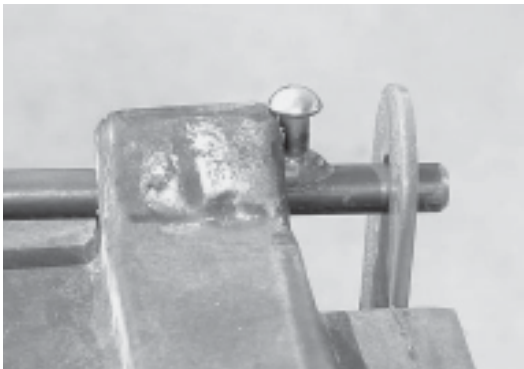
Slide pin into hinge bracket.  
(Side of pin without  
stop pin.)



Stop pin.



Push stop pin away from bracket. When pin clears bracket, push pin down and align pin in bracket hole. Let pin slide back into bracket hole.



Installed hinge pin.

Install lock bar the  
same as the hinge.



Insert hitch pin (or padlock, not  
included) to secure pin.

Lock bars can also be  
used as a lid prop by  
inserting the stop pin  
into the lock bar  
bracket hole.

